

**ALL NEW
ZEALANDERS
WELL-HOUSED**



TABLE OF CONTENTS

**Community Housing
Aotearoa Newsletter 16
November 2017**

**Atareira Easy Access
Housing – transitional
and emergency housing
for homeless tāngata
whaiora**

**Ministry of Social
Development Housing
Quarterly report:
September 2017**

**Why explore prefab
options?**

**NZIA GIB Webinar: Prefab
in Sweden**

**New Wellington network
set up**

**New opposition party
roles**

Research

In the news

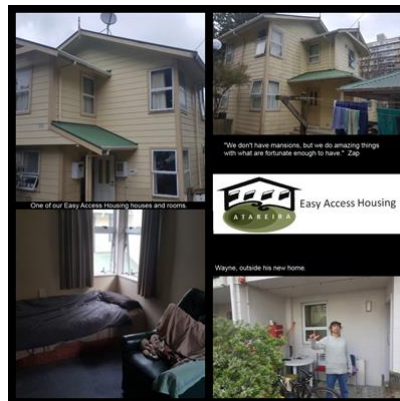
Events

**Community Research
webinar 11.00am, Monday
20th November.**

**6 December - Salvation
Army State of Our**

Community Housing Aotearoa Newsletter 16 November 2017

Atareira Easy Access Housing – transitional and emergency housing for homeless tāngata whaiora



A one-of-a-kind service for homeless tāngata whaiora with mental health and addiction issues has operated in Wellington since the early 2000's.

Easy Access Housing (EAH) provides a transitional (six-month) or emergency (three-month) shared-housing service. Intrinsic supports that empower tāngata whaiora to seek and gain longer-term housing is included in the service model that provides a unique approach in Aotearoa/New Zealand.

[Read more here.](#)

Ministry of Social Development Housing Quarterly report: September 2017

**Communities Report
Release**

**21 February 2018 - NZ
Coalition to End
Homelessness
Conference**

**7-9 March in Auckland
CoLab2018**

ISSN 2463-2619

The latest Housing Quarterly Report to September 2017 has been released and includes the latest figures for the Social Housing Register.

The Social Housing Register, the number of people eligible for housing support, has increased by 8% this quarter. We're pleased to see the Ministry of Social Development continue to publish informative data on social housing but here at Community Housing Aotearoa, we are concerned that the level of social housing need continues to increase.

[Read the report and our press release here.](#)

Why explore prefab options?



Photo/ ANNA PRICE

Andrew Booker, Housing NZ general manager of business innovation and development, expects prefabrication and off-site manufacturing to be over 50 per cent of the houses built in the next two to three years.

Experts say that preconceptions about prefabrication, a construction industry who's DNA is hard-wired to the hammer and nail, and a lack of interest from local and central government appear to be denying the country the opportunity to really tackle the housing crisis and build a lasting solution.

[They say technology is the answer to getting the number of houses needed.](#) Pamela Bell of Prefab NZ and John Tookey, AUT, say the issue of developing more prefabricated housing in New Zealand is one of scale.

There are Kiwi companies ready to go big to deliver on the promise of the new technology, but there are not enough incentives to do so.

[Mike Fox says that New Zealand's own prefab housing industry is ready to scale up to meet demand.](#)

Interested in this topic? [Go to this page](#) to explore why you should explore prefab options or you might like to attend this webinar:

NZIA GIB Webinar: Prefab in Sweden



You are invited to join the NZIA GIB Webinar: Prefab in Sweden

Tue, 28 November 12:00 PM - 1:00 PM

Pamela Bell, CEO of PrefabNZ, will provide an overview of offsite construction past, present and future - both onshore and offshore, with a focus on her recent trip to Sweden. While in Sweden, Pamela obtained an update on the state of building high-quality wood medium-density housing constructed offsite, visiting Lindbäck's, a 90-year-old company which is truly taking modular construction to new heights. Lindbäck's creates beautiful homes at a rate of twenty units per week.... [Webinar Register](#)

New Wellington network set up

Thanks to George Farrar of Emerge Aotearoa a group of emergency/transitional housing providers from the Wellington region have been meeting over the last two months.

Supported by Community Housing Aotearoa this network will continue to meet and will look at terms of reference in the new year. Other housing organisations are encouraged to join as there is a commonality of issues being raised. [Please contact George here if you are interested](#) in being part of it.

New opposition party roles

The portfolios of the new opposition party have changed and Amy Adams drops Housing, which is picked up by Michael Woodhouse, who also gets the Social Housing portfolio.

parity
OCTOBER 2017 VOLUME 30 – ISSUE 8
ISSN 1032-6170



**Responding to Homelessness
in Aotearoa New Zealand**

Ten years on from the 2007 'Responding to Homelessness in Aotearoa New Zealand' edition of Parity we are pleased to have supported Te Matapihi and the Australian Council to Homeless Persons to produce this 2017 edition.

This publication is a point-in-time record of how we have responded to the increases in homelessness since the first publication was produced. It brings together the specialist community focussed on homelessness and showcases the expertise within the country, documenting the progress and successes we've made in addressing homelessness while clarifying the challenges that remain.

[You can read it online here.](#) The article on Easy Access Housing appears in this publication. There are limited copies of the magazine that we can post to you [if you contact us here.](#)

Research

Effects of minor household interventions to block draughts on social housing temperatures: a before and after study

By Lara Rangiwhetu, Nevil Pierse & Philippa Howden-Chapman

Half of New Zealand's renters report damp or mould problems with their homes, which can have negative health implications. Tenants in a newly upgraded social housing complex complained of being cold. Sealing strips around doors and baffles in rangehoods were installed.

This exploratory study's objectives were to determine:

- (1) whether the interventions influenced indoor temperature,
- (2) the extent to which indoor temperature changed and
- (3) benefits to the tenants.

The before-and-after rapid response study was conducted in five social housing units. Indoor temperature was subjectively and objectively measured. Using multivariate normal linear regression, units were found to be on average 1.36°C warmer post-intervention after adjusting for outdoor temperature. Tenants' daily diary entries also claimed units were warmer post-intervention. Simple minor interventions to block draughts made a relatively big difference to indoor temperature and comfort of those living there. Such interventions are worthwhile, especially when housing is tenanted by vulnerable populations.

[Read the full research report here.](#)

In the news

1. [More on Kiwibuild and Kiwi buy](#)
3. [Queenstown Council to vote on Airbnb cuts](#)
4. [New Government puts Social Investment approach for vulnerable Kiwis under review](#)
6. [Housing First on the Nation](#)

Events

Community Research webinar 11.00am, Monday 20th November.

Treaty Voyages - How's Your Organisation Faring?

Engaging with the Treaty of Waitangi is a journey. Jen Margaret, a leading trainer on this subject, shares research and insights for organisations who wish to be more engaged with the Treaty. She is joined by friends from Occupational Therapy NZ who tell their story of implementing Treaty processes in their organisation. [REGISTER here for this free webinar.](#)

6 December - Salvation Army State of Our Communities Report Release



The Honourable Kris Faafoi MP for Mana

Warmly invites you to join with the Honourable Judith Collins MP for Papakura, and Poto Williams MP for Christchurch East, to the launch of:

The Salvation Army Social Policy and Parliamentary Unit's
STATE OF OUR COMMUNITIES REPORT

Featuring up-to-date analysis of the real experiences, aspirations and social and economic indicators of three communities around the nation
—Papakura, Porirua and Linwood.

Please join us at

7.30am
Wednesday 6 December 2017
Banquet Hall
Parliament Buildings
Wellington

Breakfast served at 7am. Presentation begins at 7.30am

RSVP to Vanessa_Kingi@nzf.salvationarmy.org
by no later than 29 November 2017 as admission to Parliament buildings has to be pre-authorised.



Social Policy & Parliamentary Unit
Working for the eradication of poverty in New Zealand



21 February 2018 - NZ Coalition to End Homelessness Conference

NZ COALITION
TO END HOMELESSNESS



He whānau
whare kore,
he kai mate hau
Addressing whānau
homelessness

**HUI
CONFERENCE**



Go here to register [Read more here.](#)

7-9 March in Auckland CoLab2018



International presenter : Prof. James Murray-Parkes, Director of the Advisory Committee for the MCCB, on the development of the Handbook for the Design of Modular Structures and what it means for the industry.

[Keep up to date on the website here.](#)

[Edit your subscription](#)
[Unsubscribe](#)

Level 1, Southmark House, 203 Willis Street
PO Box 11543
Wellington 6142

Phone: (04) 385 8722